

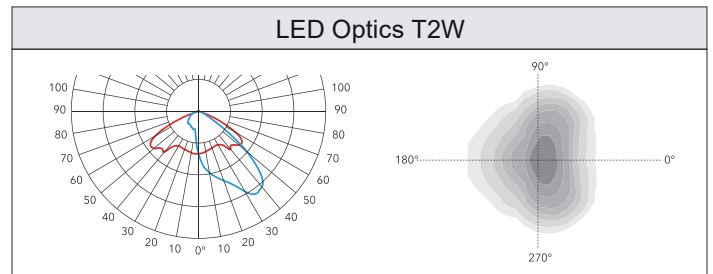
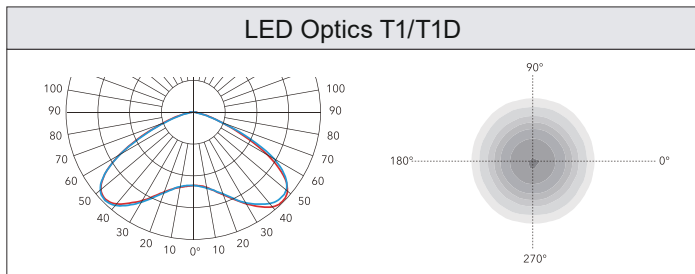


A modern design of a classic luminaire borrowing inspiration from European styling and available in four outputs.

- Die-cast aluminium housing with polycarbonate diffuser and chrome reflector.
- Optical lenses offering visual comfort and uniform light distribution.
- High quality LED chips and DALI driver as standard, with in built surge protection up to 20KV.
- UV protected pure polyester powder coated housing offering high corrosion resistance.
- Suitable for use with a range of controls and remote management systems.
- All external screws are 304 stainless steel as standard.
- RAL9005, other RAL colours available on request.



Optics



Product Specification

CODE	OPTIC	LED Qty	CCT	LUMENS	CRI	POWER	IP	IK	WEIGHT
OXO-24	T1	12	3000/4000	3040/3270	>70	24W	IP66	IK09	6.8
OXO-24	T2W			2880/3120					
OXO-40	T1	24	3000/4000	5050/5440	>70	40W	IP66	IK09	6.8
OXO-40	T2W			4800/5200					
OXO-60	T1	24	3000/4000	7510/8110	>70	60W	IP66	IK09	6.8
OXO-60	T2W			7200/7800					
OXO-80	T1D	36	3000/4000	10100/10560	>70	80W	IP66	IK09	7.1

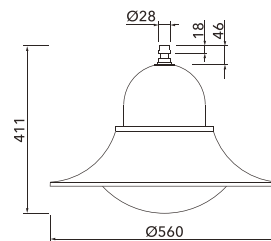
General Specification

Input voltage	220-240V
Input frequency	50/60Hz
Surge protection	20KV
LED Chips	Philips 5050
Lifetime	L70 100,000hours L80 70,000 hours L90 34,000 hours
SDCM	SDCM<6
Class	Class I
Ambient temperature	-20°C to +50°C
Material	High pressure die-cast aluminium housing with PC cover
Finish	Polyester powder coat cured under heat
RAL colour	RAL9005

Driver Details

Product	OXO-24	OXO-40	OXO-60	OXO-80
Driver	Tridonic			
Dimming control	DALI			
Driver current	630mA	1050mA	800mA	810mA
Inrush current	14.88A, 226µs	24.88A, 236µs	32A, 355µs	41.6A, 238µs
Power factor	0.97	0.97	0.97	0.98

Dimensions



OXO